

The Wye Leisure path to re-opening...

Please note that the dates are subject to change. Any amendments will be published on our Covid-19 Webpage.

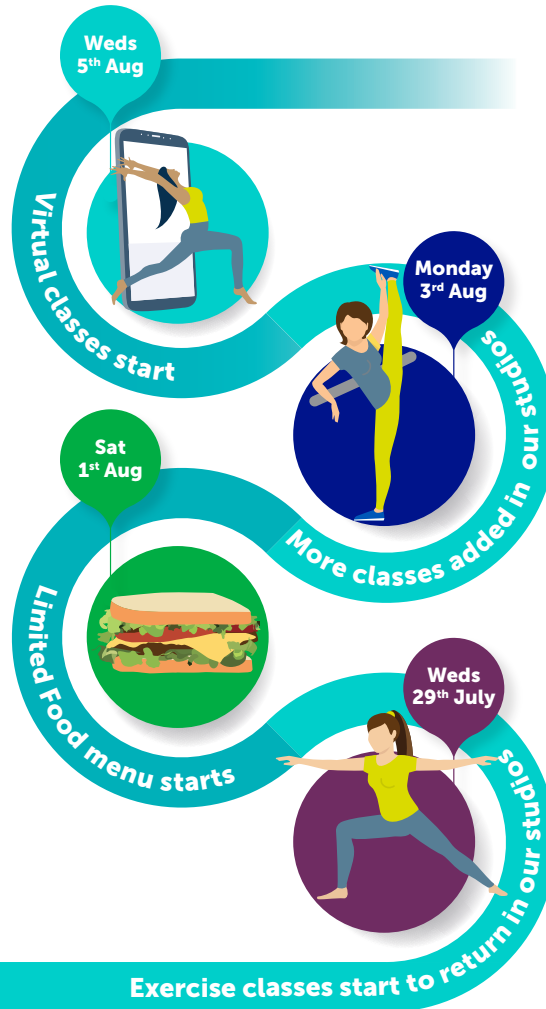


WYE LEISURE

Herefordshire's Premier Health & Leisure Club

The government is now allowing our sector to re-open if we are all cautious, alert and abide by the rules.

Our intention is to start a phased re-opening from Wednesday the 22nd of July. This information sheet gives more detail about how, what and when we'll be opening and will be updated as required.



Usage Options and Pricing

Members have two options to make use of the club:

- 1. Re-start your membership:** Starting with any remaining unused membership being used and then continuing with either monthly, quarterly or annual payments. In this case you would still need to book a slot via the WyeFitness App but no payment would be taken on entering the club, other than any membership renewals required.
- 2. Pay-As-You-Go:** Members will be given the option to turn any remaining membership into credit, held on individuals credit accounts within our membership software and this may be used to then purchase usage of the clubs facilities in a Pay-As-You-Go manner. As we move forward and as this credit gets used, additional credit can be added to keep access going in this Pay-As-You-Go way. In this case you would need to book a slot via the WyeFitness App and make payment for the booked usage on entering the club.

Cost for Pay-As-You-Go:

Adult 3hr Usage: £8.50

Adult 1.5hr Usage: £5.50

(Usage covers the fitness suite and pool halls, subject to adhering to social distancing guidelines)

Junior 3hr usage: £5.00

Junior 1.5hr usage: £3.0

Child 3hr usage: £4.00

Child 1.5hr usage: £2.50

Pay-As-You-Go:
Exercise Class Bolt-on Pack
(Monthly Direct Debit)

Physical Classes in the Studios (Not Aqua Aerobics):
£29.00 per month.

Includes access to virtual classes (Classes booked via the WyeFitness App) limited availability

Pay-As-You-Go:
Exercise Class Bolt-on Pack
(Monthly Direct Debit)

Virtual Classes:
£18.50 per month
FREE for month of August
(Classes booked via the WyeFitness App).

Please inform us how you'd like to return to Wye Leisure or if you'd like to keep your membership frozen.

Complete our online form [here](#).

Notes: The term Child/Children is a covering word for any Child on either the Junior or Child Rates.

Adult members making use of the club on a Pay-As-You-Go system may keep their child/children running on a normal membership rate as published. Please inform us of this on your first usage, otherwise the Pay-As-You-Go rates will be chargeable.

Children cannot reserve slots, however any adult booking the correct slot may bring in up to one child on the adult's reservation, providing that the child resides at the same address or is in the guardianship of the attending adult member and then providing that the child held a valid membership as at the 18th of March 2020. A strict ratio of 1:1 (1 child to 1 fee paying adult) will be in operation until further notice. Note: This ratio is inclusive of children and babies under the age of 5.

Access Slots are timed from the point you ENTER the building to the time you EXIT the building.